



PRODUCTIONS

2026 RATE CARD



# MODEL

PRINT | FASHION | RUNWAY | EXPERIMENTAL | BRAND COLLABORATION & PORTFOLIO SHOOTS

Henri models primarily for creative collaboration and content creation, with rates applied only for commercial usage

## SHOOT RATE

R1 800 – R3 000

## FITTING RATE

R500 – R800



[www.henri Strauss.com](http://www.henri Strauss.com)



[info@henri Strauss.com](mailto:info@henri Strauss.com)



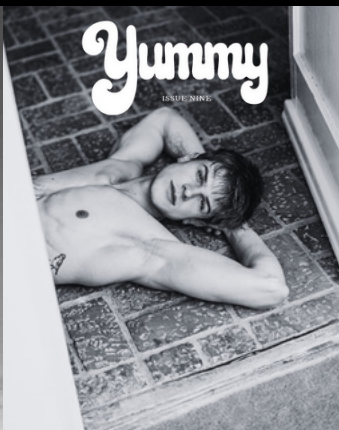
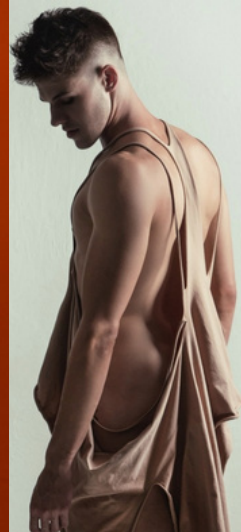
+27 82 372 8699

*Henri Strauss*

2026 RATE CARD

HS

PRODUCTIONS  
WE RUN THE SHOW



Henri Strauss

2026 MODEL CARD

Height: 187 cm (6'2") | Chest: 115 cm | Waist: 81 cm | Hips: 97 cm | Jacket: UK/US 42R (EU 52) | Shirt: Medium (M) | Pants: 32 | Shoe: | UK 10.5 / US 11.5 / EU 45.5 | Hair: Naturally Dark Brown (colours often) | Eyes: Dark Brown



www.henri Strauss.com



info@henri Strauss.com



+27 82 372 8699



# TERMS & CONDITIONS

2026 RATE CARD

- Rates subject to project scale and client requirements
- International rates available on request and quoted differently depending on project scale, scope, and market
- Public holidays, night shoots & overtime billed at industry standards
- Travel, accommodation & per diems charged where applicable
- A facilitation fee applies to small tasks requiring only a few hours of expert work — not a full day rate (2-4 hours)
- All bookings require a minimum of 50% deposit



[www.henristrauss.com](http://www.henristrauss.com)



[info@henristrauss.com](mailto:info@henristrauss.com)



+27 82 372 8699

*Henri Strauss*

2026 RATE CARD

The image features a stylized, white cursive monogram of the letters 'A' and 'S'. The 'A' is formed by a vertical line on the left and a curved line that loops around to the right. The 'S' is a continuous, flowing curve that starts from the bottom of the 'A' and loops back to the top. A thin, vertical white line is positioned to the right of the monogram, separating it from the text.

PRODUCTIONS

WE RUN THE SHOW